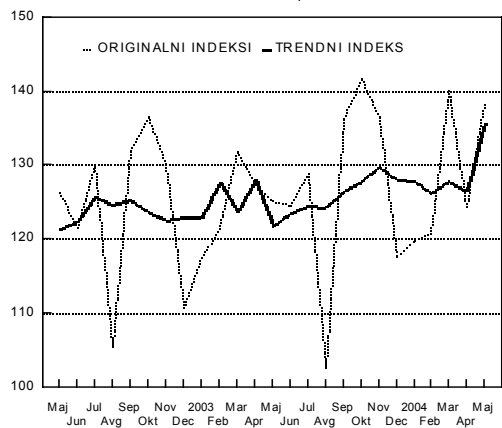


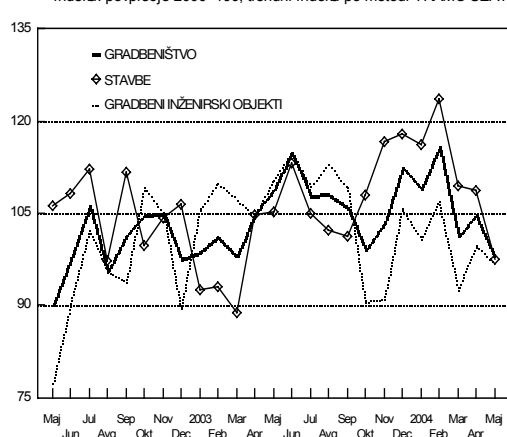
## INDUSTRIJA

indeksi: 1992=100; trendni indeksi po metodi TRAMO-SEATS



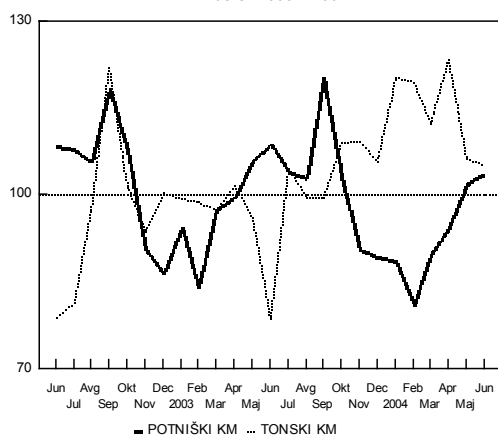
## REALNI INDEKSI VREDNOSTI OPRAVLJENIH GRADBENIH DEL

indeksi: povprečje 2000=100; trendni indeksi po metodi TRAMO-SEATS



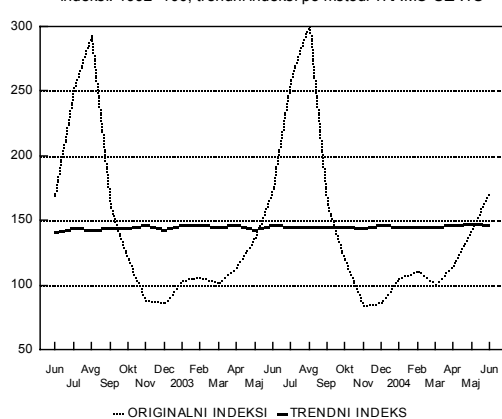
## PREVOZ POTNIKOV IN BLAGA

indeksi: 2003 = 100

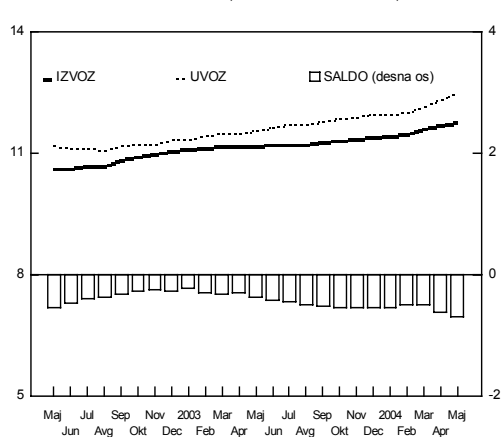


## PRENOČITVE SKUPAJ

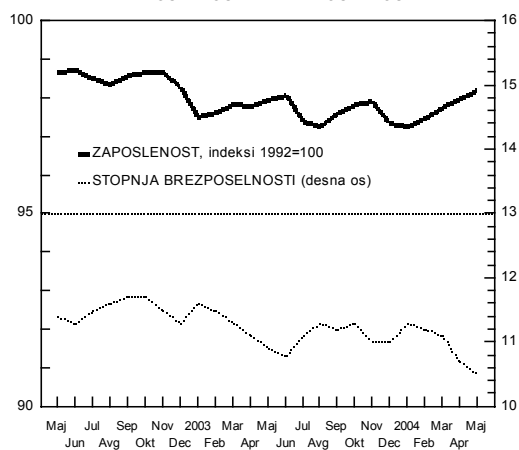
indeksi: 1992=100; trendni indeksi po metodi TRAMO-SEATS



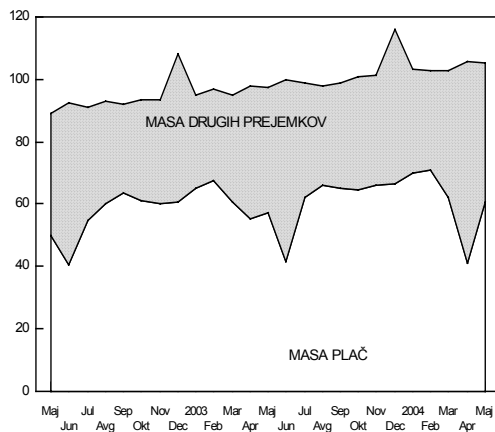
## BLAGOVNA MENJAVA, FOB, IZLOČEN VPLIV MEDVALTUNIH SPREMENB, 12 mesečne kumulative, v mrd EUR



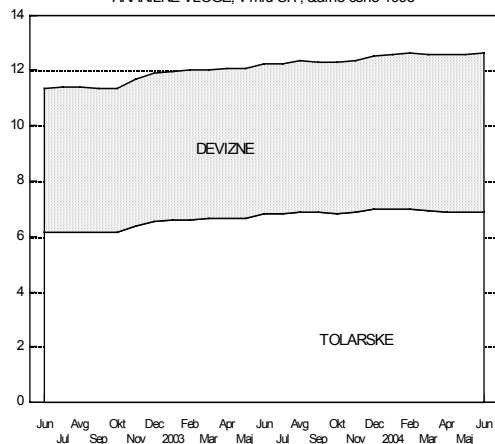
## ZAPOSLENOST IN BREZPOSELNOST



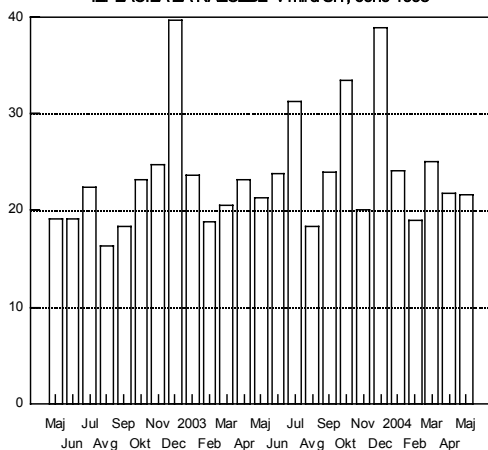
NETO PLAČE IN DRUGI PREJEMKI, v mrd SIT



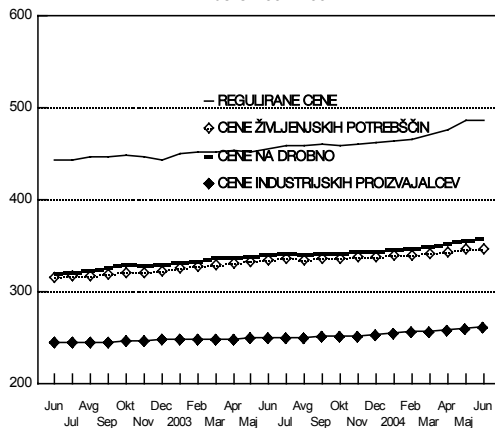
HRANILNE VLOGE, v mrd SIT, stalne cene 1995



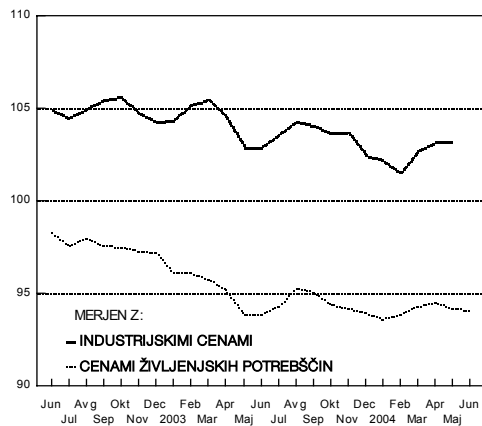
IZPLAČILA ZA NALOŽBE v mrd SIT, cene 1993



RAST IZBRANIH CENOVNIH INDIKATORJEV  
indeksi: 1992=100



REALNI DEVIZNI EFEKTIVNI TEČAJ  
indeksi: 1995=100



REALNI DEVIZNI TEČAJI POMEMBNEJŠIH VALUT  
indeksi: 1995=100

