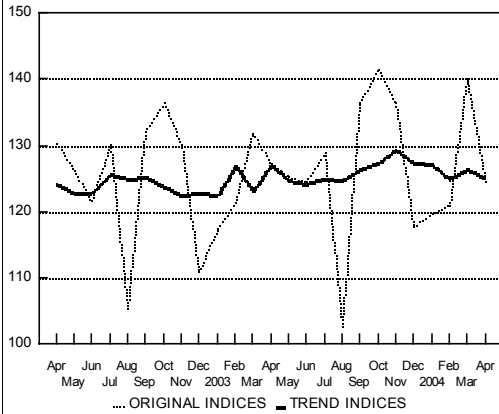


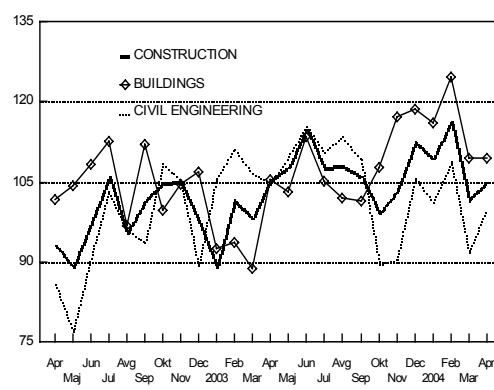
### INDUSTRY

indices: average 1992=100; trend indices by the TRAMO-SEATS method



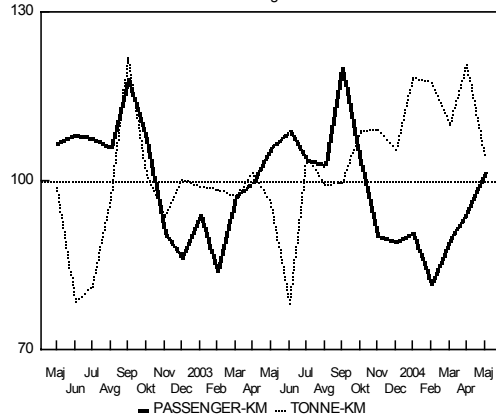
### REAL INDICES OF CONSTRUCTION PUT IN PLACE

indices: average 2000=100; trend indices by the TRAMO-SEATS method



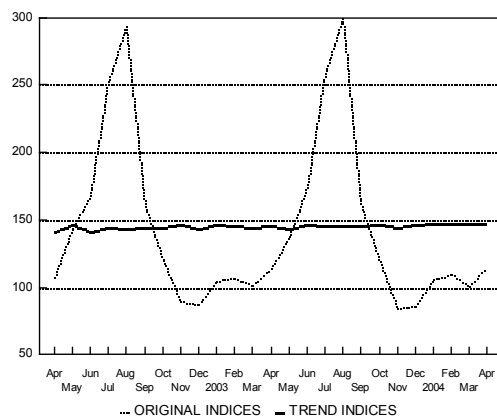
### TRANSPORT OF PASSENGER AND GOODS

indices: average 2003 = 100



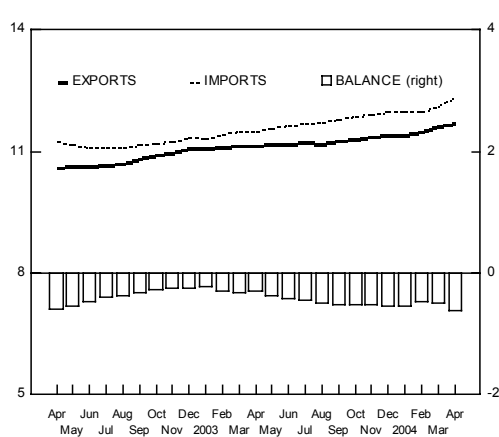
### OVERNIGHT STAYS TOTAL

indices: average 1992=100; trend indices by the TRAMO-SEATS method

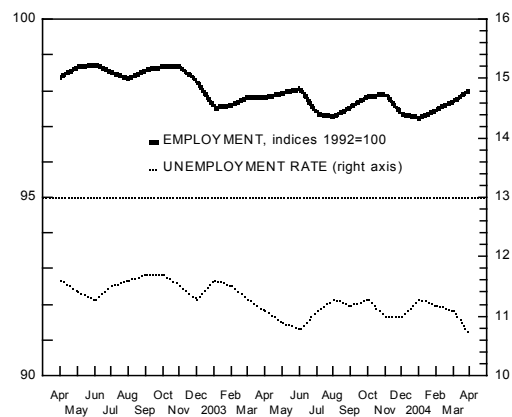


### GOODS TRADE FOB, EXCL. INTERCURRENCY CHANGES

12-month cummulative in EUR, bn



### EMPLOYMENT AND UNEMPLOYMENT



# Graphs

