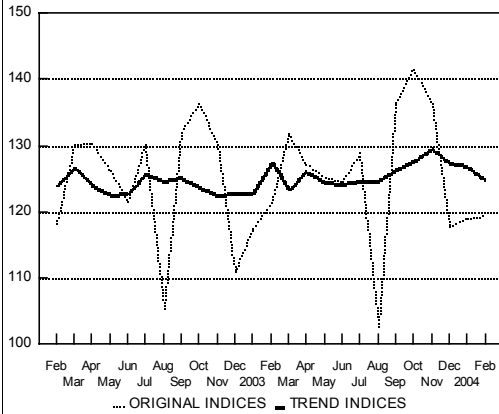


# Graphs

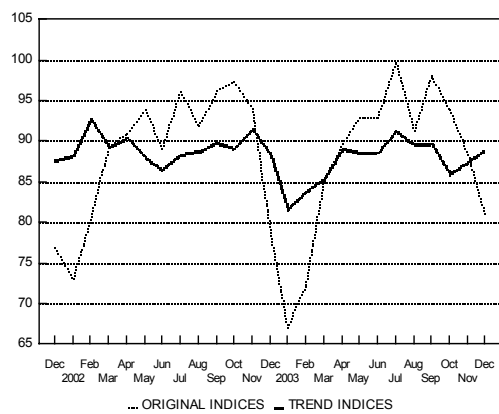
## INDUSTRY

indices: average 1992=100; trend indices by the TRAMO-SEATS method



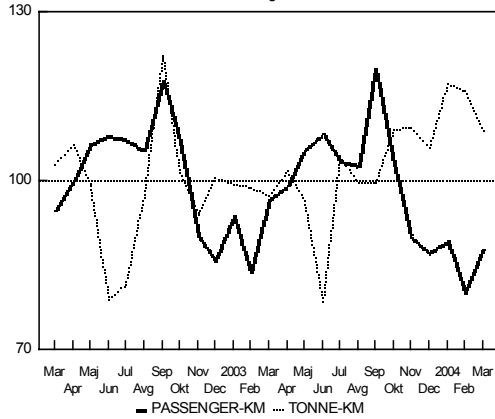
## CONSTRUCTION: WORKING HOURS

indices: average 1992=100; trend indices by the TRAMO-SEATS method



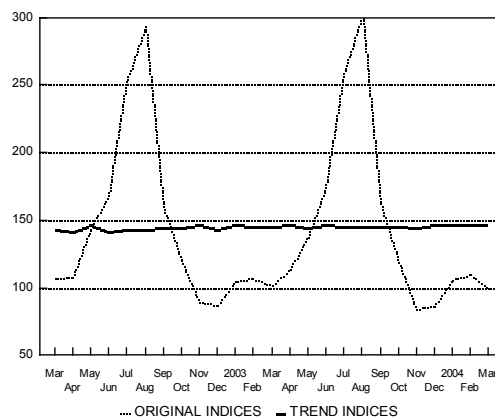
## TRANSPORT OF PASSENGER AND GOODS

indices: average 2002 = 100

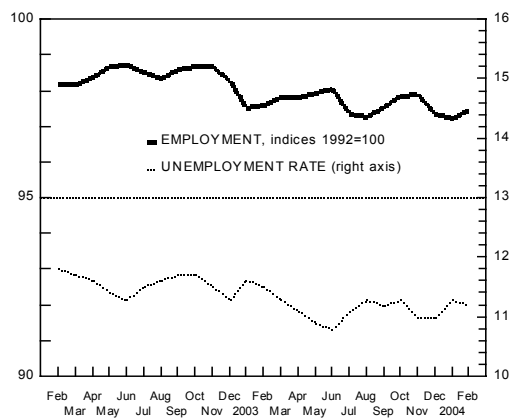


## OVERNIGHT STAYS TOTAL

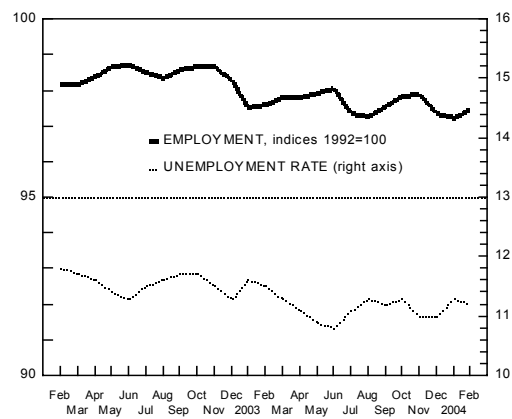
indices: average 1992=100; trend indices by the TRAMO-SEATS method



## EMPLOYMENT AND UNEMPLOYMENT



## EMPLOYMENT AND UNEMPLOYMENT



# Graphs

