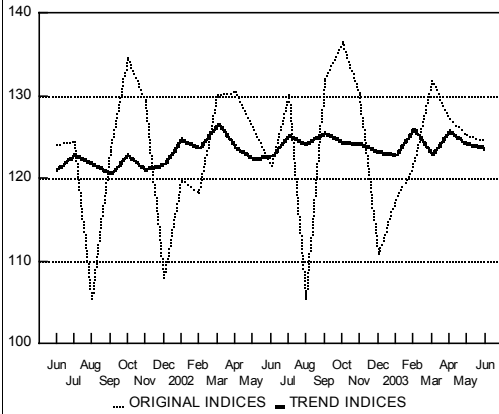


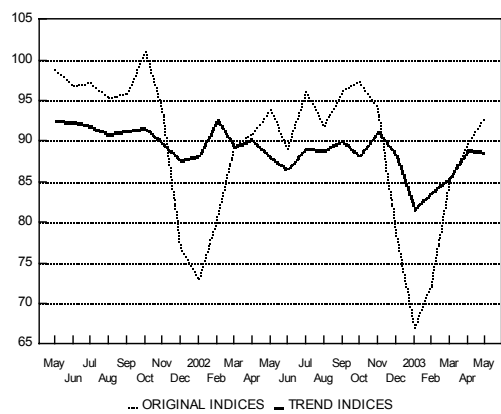
INDUSTRY

indices: average 1992=100; trend indices by the TRAMO-SEATS method

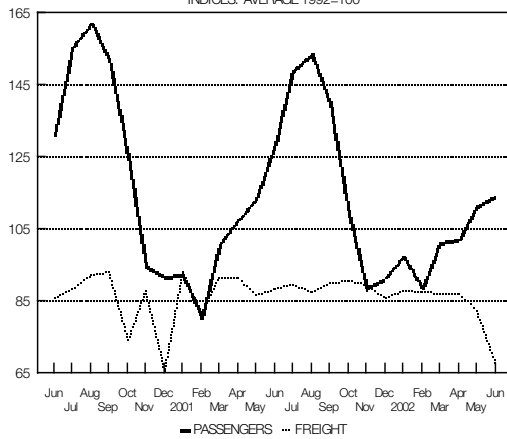


CONSTRUCTION: WORKING HOURS

indices: average 1992=100; trend indices by the TRAMO-SEATS method

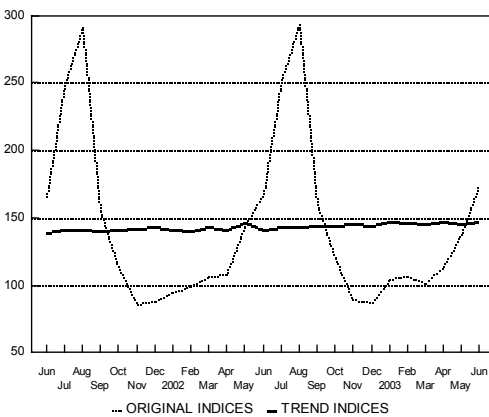


PASSENGER AND FREIGHT TRANSPORT
INDICES: AVERAGE 1992=100

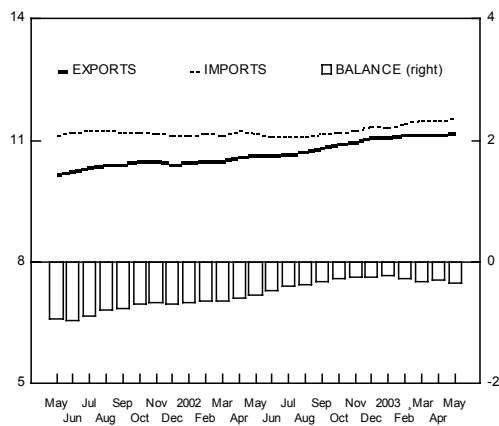


OVERNIGHT STAYS TOTAL

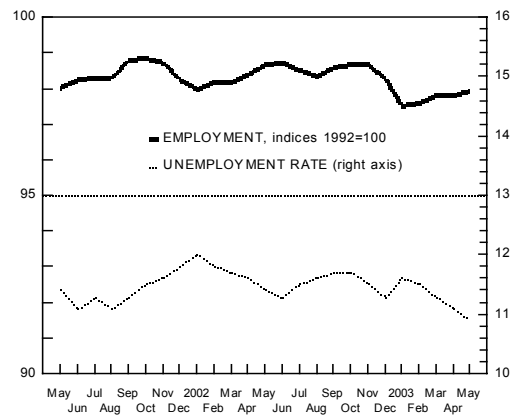
indices: average 1992=100; trend indices by the TRAMO-SEATS method



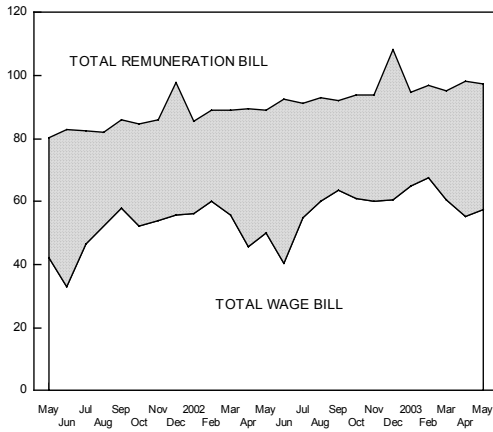
GOODS TRADE FOB, EXCL. INTERCURRENCY CHANGES
12-month cummulatives in EUR, bn



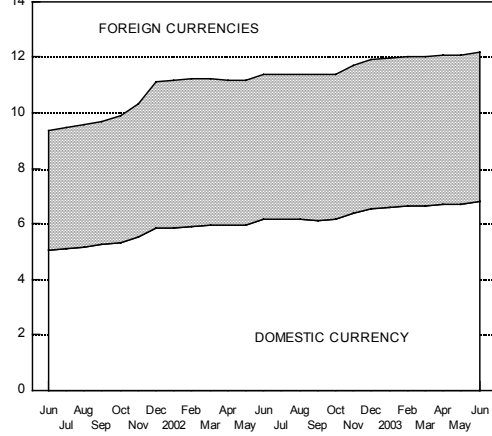
EMPLOYMENT AND UNEMPLOYMENT



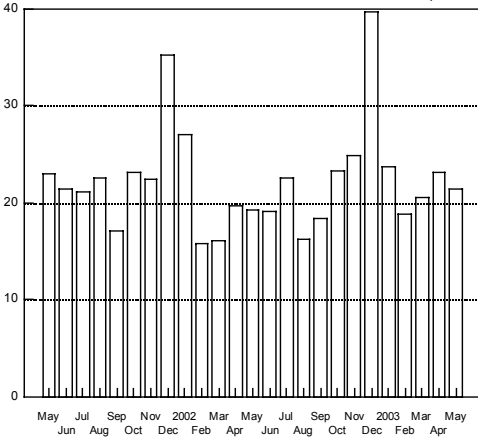
NET WAGES AND OTHER REMUNERATION, in SITbn



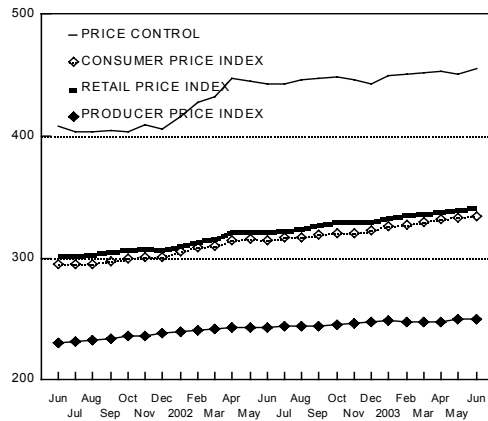
HOUSEHOLDS' DEPOSITS in SITbn in constant 1995 prices



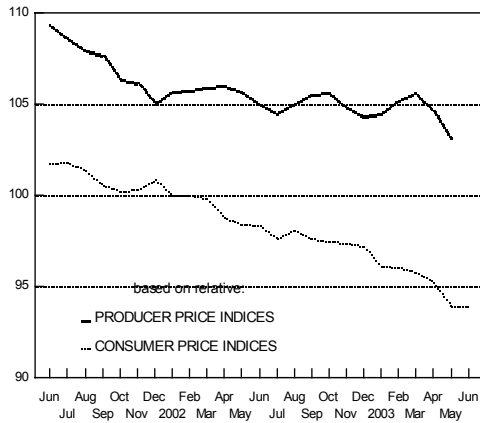
PAYMENTS FOR INVESTMENT in SITbn, constant 1993 prices



GROWTH IN SELECTED PRICE INDICATORS INDICES: AVERAGE 1992=100



FOREIGN EFFECTIVE EXCHANGE RATE IN REAL TERMS INDICES: AVERAGE 1995=100



FOREIGN EXCHANGE RATE OF SELECTED CURRENCIES IN REAL TERMS, INDICES: AVERAGE 1995=100

